

Bluefield State University
School of Education and County Partnership Agreement

A. Purpose Statement

The county and schools will provide supervised clinical experience to assist in the translation of theory and research into practice. These schools will provide an environment where current research-based instructional practices and programs can be observed and experienced by those preparing for professional careers in education.

The partnership is collaboration among school/college faculty and students to enhance public education. This partnership is founded on the premise that both learners of public schools and learners from the college can benefit this partnership.

We seek to achieve the following goals:

- The best possible environment for student academic learning and personal self-fulfillment
- Opportunities for pre-service and career-long professional learning and development of teachers
- Ongoing access to the best knowledge and talent related to student learning and development
- To create opportunities for enhancing the professional nature of teaching

B. The School Should Be Prepared to Provide:

- Placement for Bluefield State University students
- A cadre of teachers to be invited to participate in in-service seminars on current practices of teaching/supervision
- Flexible field experiences with access to a wide range of grade levels and facilities
- Access to curriculum materials and instructional technology
- Access with necessary approval to school information/data for clinical related work
- Opportunities for school faculty to voluntarily participate on the EPPAC and other committees

C. The Teacher Education Unit Should Be Prepared to Provide:

- Consultant services and technical assistance in a variety of educational activities
- Workshops and seminars related to selected educational topics
- College staff to serve on committees as requested
- Assistance in grant writing for collaborative projects
- Student teachers and pre-student teachers

Tazewell County Schools
Schools/County



Superintendent or Designee

Darrell Thompson, Ed. D.
BSC Placement Coordinator

April 14, 2023
Date

THE UNIVERSITY OF CHICAGO

THE UNIVERSITY OF CHICAGO
DIVISION OF THE PHYSICAL SCIENCES
DEPARTMENT OF CHEMISTRY

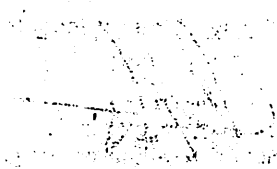
1954
1955
1956
1957
1958
1959
1960
1961
1962
1963
1964
1965
1966
1967
1968
1969
1970
1971
1972
1973
1974
1975
1976
1977
1978
1979
1980
1981
1982
1983
1984
1985
1986
1987
1988
1989
1990
1991
1992
1993
1994
1995
1996
1997
1998
1999
2000
2001
2002
2003
2004
2005
2006
2007
2008
2009
2010
2011
2012
2013
2014
2015
2016
2017
2018
2019
2020
2021
2022
2023
2024
2025

THE UNIVERSITY OF CHICAGO
DIVISION OF THE PHYSICAL SCIENCES
DEPARTMENT OF CHEMISTRY
1954
1955
1956
1957
1958
1959
1960
1961
1962
1963
1964
1965
1966
1967
1968
1969
1970
1971
1972
1973
1974
1975
1976
1977
1978
1979
1980
1981
1982
1983
1984
1985
1986
1987
1988
1989
1990
1991
1992
1993
1994
1995
1996
1997
1998
1999
2000
2001
2002
2003
2004
2005
2006
2007
2008
2009
2010
2011
2012
2013
2014
2015
2016
2017
2018
2019
2020
2021
2022
2023
2024
2025

THE UNIVERSITY OF CHICAGO

THE UNIVERSITY OF CHICAGO
DIVISION OF THE PHYSICAL SCIENCES
DEPARTMENT OF CHEMISTRY

THE UNIVERSITY OF CHICAGO



**Bluefield State University
School of Education and County Partnership Agreement**

A. Purpose Statement

The county and schools will provide supervised clinical experience to assist in the translation of theory and research into practice. These schools will provide an environment where current research-based instructional practices and programs can be observed and experienced by those preparing for professional careers in education.

The partnership is collaboration among school/college faculty and students to enhance public education. This partnership is founded on the premise that both learners of public schools and learners from the college can benefit this partnership.

We seek to achieve the following goals:

- The best possible environment for student academic learning and personal self-fulfillment
- Opportunities for pre-service and career-long professional learning and development of teachers
- Ongoing access to the best knowledge and talent related to student learning and development
- To create opportunities for enhancing the professional nature of teaching

B. The School Should Be Prepared to Provide:

- Placement for Bluefield State University students
- A cadre of teachers to be invited to participate in in-service seminars on current practices of teaching/supervision
- Flexible field experiences with access to a wide range of grade levels and facilities
- Access to curriculum materials and instructional technology
- Access with necessary approval to school information/data for clinical related work
- Opportunities for school faculty to voluntarily participate on the EPPAC and other committees

C. The Teacher Education Unit Should Be Prepared to Provide:

- Consultant services and technical assistance in a variety of educational activities
- Workshops and seminars related to selected educational topics
- College staff to serve on committees as requested
- Assistance in grant writing for collaborative projects
- Student teachers and pre-student teachers

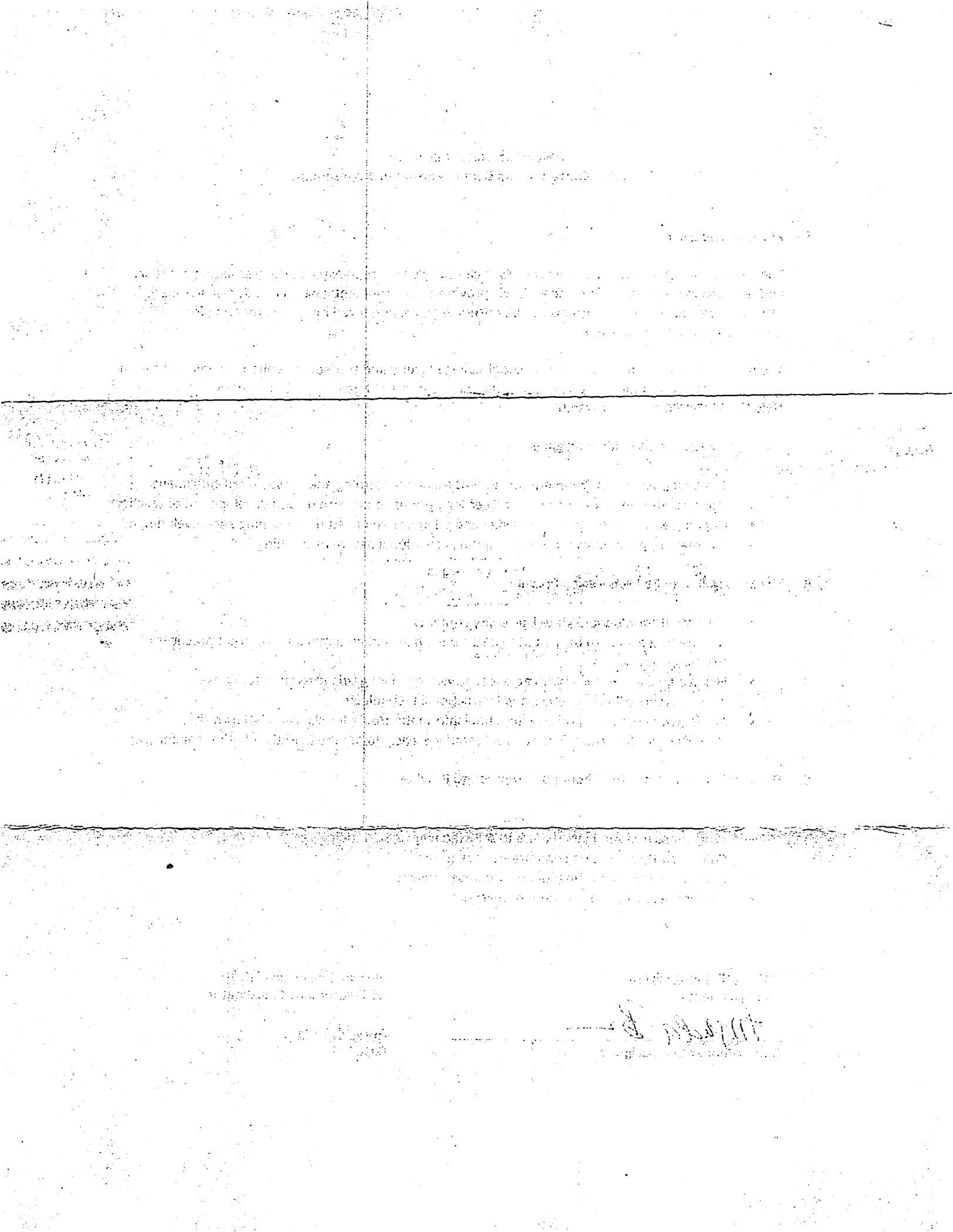
McDowell County Schools
Schools/County



Superintendent or Designee

Darrell Thompson, Ed. D.
BSC Placement Coordinator

April 14, 2023
Date



Faint, illegible text at the top of the page, possibly a header or title.

Block of faint, illegible text in the upper middle section of the page.

Large block of faint, illegible text in the middle section of the page, separated by a horizontal line.

Block of faint, illegible text in the lower middle section of the page.

Faint, illegible text in the bottom left corner.

Handwritten signature or mark in the bottom right corner.

**Bluefield State University
School of Education and County Partnership Agreement**

A. Purpose Statement

The county and schools will provide supervised clinical experience to assist in the translation of theory and research into practice. These schools will provide an environment where current research-based instructional practices and programs can be observed and experienced by those preparing for professional careers in education.

The partnership is collaboration among school/college faculty and students to enhance public education. This partnership is founded on the premise that both learners of public schools and learners from the college can benefit this partnership.

We seek to achieve the following goals:

- The best possible environment for student academic learning and personal self-fulfillment
- Opportunities for pre-service and career-long professional learning and development of teachers
- Ongoing access to the best knowledge and talent related to student learning and development
- To create opportunities for enhancing the professional nature of teaching

B. The School Should Be Prepared to Provide:

- Placement for Bluefield State University students
- A cadre of teachers to be invited to participate in in-service seminars on current practices of teaching/supervision
- Flexible field experiences with access to a wide range of grade levels and facilities
- Access to curriculum materials and instructional technology
- Access with necessary approval to school information/data for clinical related work
- Opportunities for school faculty to voluntarily participate on the EPPAC and other committees

C. The Teacher Education Unit Should Be Prepared to Provide:

- Consultant services and technical assistance in a variety of educational activities
- Workshops and seminars related to selected educational topics
- College staff to serve on committees as requested
- Assistance in grant writing for collaborative projects
- Student teachers and pre-student teachers

Greenbrier County Schools
Schools/County



Superintendent or Designee

Darrell Thompson, Ed. D.
BSC Placement Coordinator

April 14, 2023
Date

THE UNIVERSITY OF CHICAGO

Department of Chemistry

Chicago, Illinois

Dear Sir:

I am pleased to hear from you and to learn that you are interested in the work of the Department of Chemistry at the University of Chicago.

The Department of Chemistry at the University of Chicago is one of the largest and most distinguished in the world. It is headed by Professor [Name], who is a member of the National Academy of Sciences and has received many honors and awards for his work in chemistry.

We are currently looking for a graduate student to work with Professor [Name] on his research in the field of [Field]. If you are interested in this position, please send me your resume and a letter of recommendation from your advisor.

I will be glad to discuss this position with you if you wish. Please contact me at the address above or by telephone at [Number].

Sincerely,
[Name]

Bluefield State University
School of Education and County Partnership Agreement

A. Purpose Statement

The county and schools will provide supervised clinical experience to assist in the translation of theory and research into practice. These schools will provide an environment where current research-based instructional practices and programs can be observed and experienced by those preparing for professional careers in education.

The partnership is collaboration among school/college faculty and students to enhance public education. This partnership is founded on the premise that both learners of public schools and learners from the college can benefit this partnership.

We seek to achieve the following goals:

- The best possible environment for student academic learning and personal self-fulfillment
- Opportunities for pre-service and career-long professional learning and development of teachers
- Ongoing access to the best knowledge and talent related to student learning and development
- To create opportunities for enhancing the professional nature of teaching

B. The School Should Be Prepared to Provide:

- Placement for Bluefield State college students
- A cadre of teachers to be invited to participate in in-service seminars on current practices of teaching/supervision
- Flexible field experiences with access to a wide range of grade levels and facilities
- Access to curriculum materials and instructional technology
- Access with necessary approval to school information/data for clinical related work
- Opportunities for school faculty to voluntarily participate on the EPPAC and other committees

C. The Teacher Education Unit Should Be Prepared to Provide:

- Consultant services and technical assistance in a variety of educational activities
- Workshops and seminars related to selected educational topics
- College staff to serve on committees as requested
- Assistance in grant writing for collaborative projects
- Student teachers and pre-student teachers

Smyth County Schools
Schools/County



Superintendent or Designee

Darrell Thompson, Ed. D.
BSC Placement Coordinator

April 14, 2023
Date

UNITED STATES DEPARTMENT OF THE INTERIOR
BUREAU OF LAND MANAGEMENT

WHEREAS, certain lands owned by the United States are situated in the State of Colorado, and certain of said lands are being offered for sale to the highest bidder, and

and whereas, it is the policy of the United States to sell such lands to the highest bidder, and

UNITED STATES DEPARTMENT OF THE INTERIOR
BUREAU OF LAND MANAGEMENT
WASHINGTON, D. C. 20250

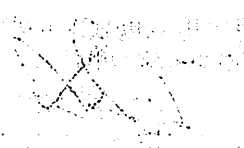
and whereas, the Secretary of the Interior has determined that it is in the public interest to sell such lands to the highest bidder, and

and whereas, the Secretary of the Interior has determined that it is in the public interest to sell such lands to the highest bidder, and

and whereas, the Secretary of the Interior has determined that it is in the public interest to sell such lands to the highest bidder, and

and whereas, the Secretary of the Interior has determined that it is in the public interest to sell such lands to the highest bidder, and

and whereas, the Secretary of the Interior has determined that it is in the public interest to sell such lands to the highest bidder, and



**Bluefield State University
School of Education and County Partnership Agreement**

A. Purpose Statement

The county and schools will provide supervised clinical experience to assist in the translation of theory and research into practice. These schools will provide an environment where current research-based instructional practices and programs can be observed and experienced by those preparing for professional careers in education.

The partnership is collaboration among school/college faculty and students to enhance public education. This partnership is founded on the premise that both learners of public schools and learners from the college can benefit this partnership.

We seek to achieve the following goals:

- The best possible environment for student academic learning and personal self-fulfillment
- Opportunities for pre-service and career-long professional learning and development of teachers
- Ongoing access to the best knowledge and talent related to student learning and development
- To create opportunities for enhancing the professional nature of teaching

B. The School Should Be Prepared to Provide:

- Placement for Bluefield State University students
- A cadre of teachers to be invited to participate in in-service seminars on current practices of teaching/supervision
- Flexible field experiences with access to a wide range of grade levels and facilities
- Access to curriculum materials and instructional technology
- Access with necessary approval to school information/data for clinical related work
- Opportunities for school faculty to voluntarily participate on the EPPAC and other committees

C. The Teacher Education Unit Should Be Prepared to Provide:

- Consultant services and technical assistance in a variety of educational activities
- Workshops and seminars related to selected educational topics
- College staff to serve on committees as requested
- Assistance in grant writing for collaborative projects
- Student teachers and pre-student teachers

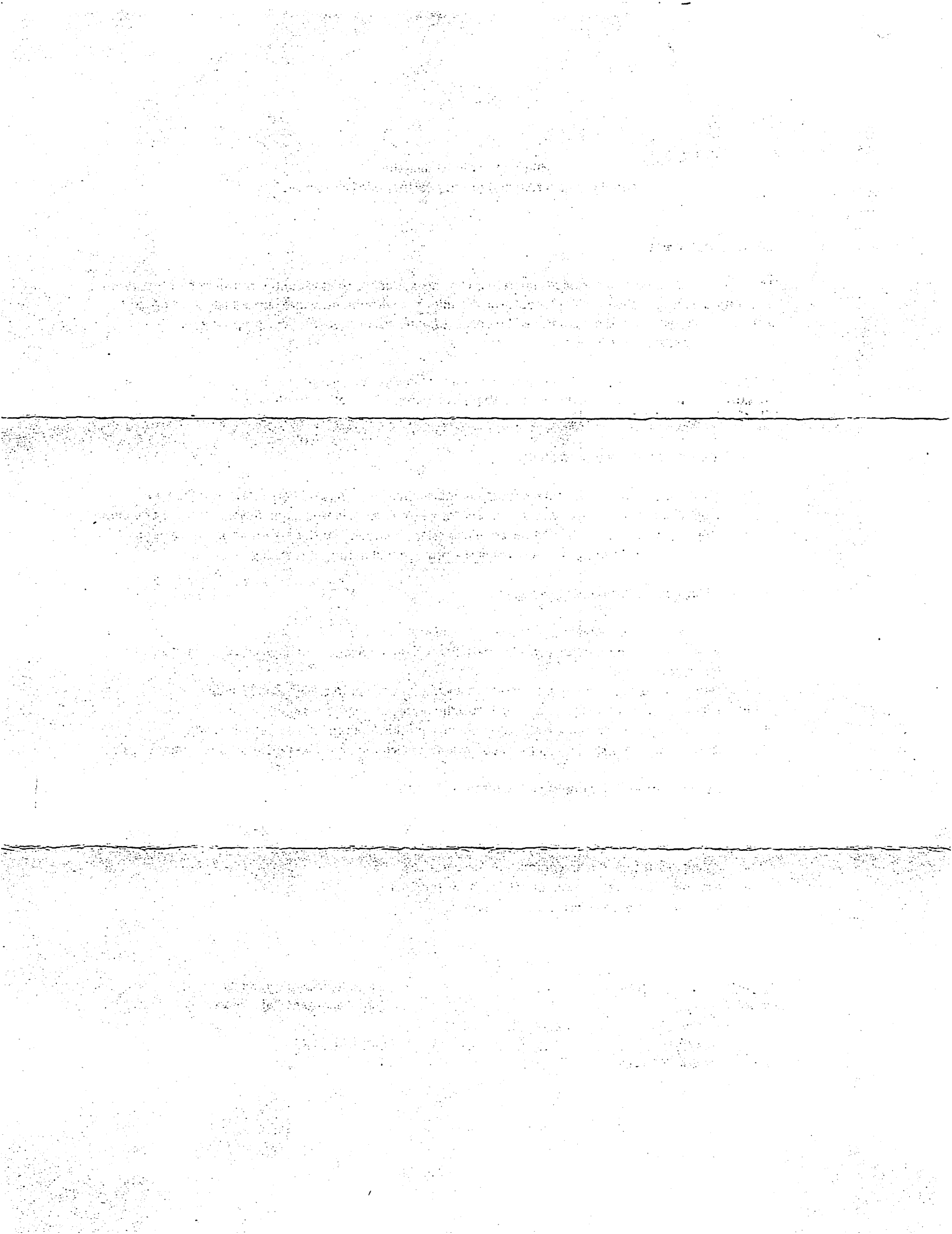
Hampshire County Schools
Schools/County



Superintendent or Designee

Darrell Thompson, Ed. D.
BSC Placement Coordinator

April 14, 2023
Date



Bluefield State University
School of Education and County Partnership Agreement

A. Purpose Statement

The county and schools will provide supervised clinical experience to assist in the translation of theory and research into practice. These schools will provide an environment where current research-based instructional practices and programs can be observed and experienced by those preparing for professional careers in education.

The partnership is collaboration among school/college faculty and students to enhance public education. This partnership is founded on the premise that both learners of public schools and learners from the college can benefit this partnership.

We seek to achieve the following goals:

- The best possible environment for student academic learning and personal self-fulfillment
- Opportunities for pre-service and career-long professional learning and development of teachers
- Ongoing access to the best knowledge and talent related to student learning and development
- To create opportunities for enhancing the professional nature of teaching

B. The School Should Be Prepared to Provide:

- Placement for Bluefield State University students
- A cadre of teachers to be invited to participate in in-service seminars on current practices of teaching/supervision
- Flexible field experiences with access to a wide range of grade levels and facilities
- Access to curriculum materials and instructional technology
- Access with necessary approval to school information/data for clinical related work
- Opportunities for school faculty to voluntarily participate on the EPPAC and other committees

C. The Teacher Education Unit Should Be Prepared to Provide:

- Consultant services and technical assistance in a variety of educational activities
- Workshops and seminars related to selected educational topics
- College staff to serve on committees as requested
- Assistance in grant writing for collaborative projects
- Student teachers and pre-student teachers

Giles County Schools
Schools/County



Superintendent or Designee

Darrell Thompson, Ed. D.
BSC Placement Coordinator

April 14, 2023
Date

THE STATE OF TEXAS

COUNTY OF [illegible]

[illegible]

[illegible text]

[illegible text]

[illegible text]

NOTARY PUBLIC
[illegible text]

[illegible text]

[illegible text]

[illegible text]

[illegible text]

[illegible text]

[illegible text]

[illegible text]

[illegible text]

[illegible text]

[illegible text]

[illegible text]

[illegible signature]

**Bluefield State University
School of Education and County Partnership Agreement**

A. Purpose Statement

The county and schools will provide supervised clinical experience to assist in the translation of theory and research into practice. These schools will provide an environment where current research-based instructional practices and programs can be observed and experienced by those preparing for professional careers in education.

The partnership is collaboration among school/college faculty and students to enhance public education. This partnership is founded on the premise that both learners of public schools and learners from the college can benefit this partnership.

We seek to achieve the following goals:

- The best possible environment for student academic learning and personal self-fulfillment
- Opportunities for pre-service and career-long professional learning and development of teachers
- Ongoing access to the best knowledge and talent related to student learning and development
- To create opportunities for enhancing the professional nature of teaching

B. The School Should Be Prepared to Provide:

- Placement for Bluefield State University students
- A cadre of teachers to be invited to participate in in-service seminars on current practices of teaching/supervision
- Flexible field experiences with access to a wide range of grade levels and facilities
- Access to curriculum materials and instructional technology
- Access with necessary approval to school information/data for clinical related work
- Opportunities for school faculty to voluntarily participate on the EPPAC and other committees

C. The Teacher Education Unit Should Be Prepared to Provide:

- Consultant services and technical assistance in a variety of educational activities
- Workshops and seminars related to selected educational topics
- College staff to serve on committees as requested
- Assistance in grant writing for collaborative projects
- Student teachers and pre-student teachers

Jefferson County Schools
Schools/County



Superintendent or Designee

Darrell Thompson, Ed. D.
BSC Placement Coordinator

April 14, 2023
Date

CONFIDENTIAL

... ..

... ..

... ..

... ..

... ..

... ..

... ..

**Bluefield State University
School of Education and County Partnership Agreement**

A. Purpose Statement

The county and schools will provide supervised clinical experience to assist in the translation of theory and research into practice. These schools will provide an environment where current research-based instructional practices and programs can be observed and experienced by those preparing for professional careers in education.

The partnership is collaboration among school/college faculty and students to enhance public education. This partnership is founded on the premise that both learners of public schools and learners from the college can benefit this partnership.

We seek to achieve the following goals:

- The best possible environment for student academic learning and personal self-fulfillment
- Opportunities for pre-service and career-long professional learning and development of teachers
- Ongoing access to the best knowledge and talent related to student learning and development
- To create opportunities for enhancing the professional nature of teaching

B. The School Should Be Prepared to Provide:

- Placement for Bluefield State University students
- A cadre of teachers to be invited to participate in in-service seminars on current practices of teaching/supervision
- Flexible field experiences with access to a wide range of grade levels and facilities
- Access to curriculum materials and instructional technology
- Access with necessary approval to school information/data for clinical related work
- Opportunities for school faculty to voluntarily participate on the EPPAC and other committees

C. The Teacher Education Unit Should Be Prepared to Provide:

- Consultant services and technical assistance in a variety of educational activities
- Workshops and seminars related to selected educational topics
- College staff to serve on committees as requested
- Assistance in grant writing for collaborative projects
- Student teachers and pre-student teachers

Wythe County Schools
Schools/County



Superintendent or Designee

Darrell Thompson, Ed. D.
BSC Placement Coordinator

April 14, 2023
Date

1941

1941

1941

1941

1941

1941

1941


1941

1941

II. The School System Board of Education

- A. Affirms that it will permit teacher candidates as approved by the Board to practice teach and become involved in other educational activities.
- B. Affirms that it will place all teacher candidates (both clinical and student teaching) on the Board's agenda and make their presence and assignment(s) in the school system a part of the board minutes, hereby recognizing their official acceptance in the school system as being placed.
- C. Provides adequate counseling/in-service for teacher candidates by addressing school system and building policy to enhance the teacher candidate's knowledge of the system and the rules and regulations under which all employees must comply in carrying out their regular duties.
- D. Affirms that it will cooperate with the personnel from the Institution of Higher Education in the selection of the site(s) and station(s) for the teacher candidates, both clinical and student teaching.
- E. Affirms that if a conflict shall arise during a teacher candidate's clinical or student teaching experience, that appropriate Institution of Higher Education personnel will be contacted to resolve said problem in an amenable manner, with minimal trauma to students, the teacher candidate, and staff members.

This agreement is signed by both parties and shall become effective when approved by the Mercer County Board of Education.


Darrell Thompson, Ed.D.
Coordinator of Clinical Experiences
Bluefield State College


Date


Superintendent, MCS


Date

**School System and Institution of Higher Education
Articles of Agreement
For Teacher Candidate Clinical Experiences and Student Teaching**

This agreement made on the 23rd day of March 2023, by and between Bluefield State University and Mercer County Public Schools will set forth responsibilities relating to the placement of teacher candidates for clinical experience and student teaching in the public schools during the 2023-2024 fiscal year. This agreement shall be effective from July 1, 2023, through June 30, 2024.

I. The Institution of Higher Education

- A. Affirms that all teacher candidates are bona fide students of the institution requesting placement in the county.
- B. Affirms that all teacher candidates will be placed at teaching stations following the school system's procedure for securing proper placements and selection of professionally certified cooperating teachers.
- C. Affirms that all teacher candidates placed have met the minimum course work required at the level appropriate for clinical or student teaching experience(s), have obtained a WVDE Student Teacher Permit prior to placement and have submitted Permit and Results of Background Check to Mercer County Board of Education prior to placement.
- D. Affirms that the teacher candidates will be properly supervised, a minimum of five (5) visits per placement, by Institution of Higher Education personnel.
- E. Affirms that Institution of Higher Education personnel will consult with proper school system administrators and teachers on the progress or lack of progress of teacher candidates during the clinical or student teaching experience(s).
- F. Affirms that teacher candidates will abide by all regulations of the school system.
- G. Affirms that teacher candidates have been instructed about employee confidentiality and confidentiality of student records and will fully comply with county practices as outlined in Mercer County Policies J-4, BFH, and G-24 section 3.1.7.
- H. Affirms that any compensation or tuition waiver for principals and/or teachers of cooperating schools is provided throughout the school system unless otherwise agreed.