

8 Steps to complete your FAFSA for 22-23 Academic Year

Completing the FAFSA® form is the first step to obtaining federal student aid to pay for your higher education. Follow these eight simple steps to set you up for success and submit it on time. Are you Ready to fill out the FAFSA form?

1) Create a StudentAid.gov account (FSA ID)

- **Student:** An FSA ID is a username and password you need to sign the FAFSA form online. If you don't have an FSA ID, [get an FSA ID here](#). It takes about 10 minutes to create an FSA ID. If this will be your first time filling out the FAFSA form, you'll be able to use your FSA ID right away to sign and submit your FAFSA form online. If this is not your first time filling out the FAFSA form, you may need to wait one to three days for us to verify your info before you can use your FSA ID to renew your FAFSA form and sign it online.
- **Parent:** If your child is [required to report parent information on the FAFSA form](#), you need to create your own FSA ID in order to sign your child's FAFSA form online. [Create an FSA ID here](#). Parents are able to use their FSA IDs right away.

Some of the most common FAFSA errors occur when the student and parent mix up their FSA IDs. If you don't want your financial aid to be delayed, it's extremely important that each parent and each student create his or her own FSA ID and that they do not share it with ANYONE, not even with each other. You should also have separate emails to use for verification purposes.

2) Start the FAFSA® form at [fafsa.gov](#).StudentAid.gov

The 2022-2023 FAFSA form launched October 1! Even if your state and school deadlines aren't for a while, you should complete the FAFSA form as soon as possible because some states and schools run out of financial aid early and have limited funds. Don't wait until the last minute to apply!

Start the FAFSA at [studentaid.gov](#)

- **If you are the student:** Click "I am the student." Enter your FSA ID username and password, and click "Next."
- **If you are the parent:** Click "I am a parent, preparer, or student from a Freely Associated State." Provide the student's name, Social Security number, and date of birth, and click "Next."

Choose whether you are the student or the parent on the first page of the FAFSA form.

Choose which FAFSA form you'd like to complete:

- **2020–21 FAFSA form** if you will be attending college between July 1, 2020, and June 30, 2021.
- **2021-22 FAFSA form if you will be attending college between July 1, 2021, and June 30, 2022.**
- **Both:** If you will be attending college during both time periods and haven't completed your 2020–21 FAFSA form yet, complete that first, wait one to three days until it processes, then go back in and complete the 2021–22 FAFSA form.

TIP: If you are given the option to complete a “renewal” FAFSA form, choose that option.

When you choose to **renew** your FAFSA form, your demographic information from the previous year will roll over into your new application, saving you some time.

Create a save key

- Unlike the FSA ID, the save key is meant to be shared. A save key is a temporary password that allows you and your parent(s) to “pass” the FAFSA form back and forth. It also allows you to save the FAFSA form and return to it later. This is especially helpful if you and your parent are not in the same place.
- Watch the [“FAFSA and FSA ID Tips for Parents”](#) video
 - **Remember, the FAFSA form is not a onetime thing. You must complete a FAFSA form for each school year.**

3) Fill out the Student Demographics section

This is information such as your name, date of birth, etc. If you have completed the FAFSA form in the past or if you log into the FAFSA form with your FSA ID, a lot of your personal information will be prepopulated to save you time. Make sure you enter your personal information exactly as it appears on your Social Security card. (That's right, no nicknames.)

Parents:

Remember that the FAFSA form is the student's application, not yours. When the FAFSA form says "you" or "your," it's referring to the student (unless otherwise noted). Pay attention to whether you're being asked for student or parent information.

4) List the schools to which you want your FAFSA® information sent

In the School Selection section, **add every school you're considering, even if you haven't applied or been accepted yet.** It doesn't hurt your application to add more schools; colleges can't see the other schools you've added. In fact, you don't even have to remove schools if you later decide not to apply or attend. If you don't end up applying or getting accepted to a school, the school can just disregard your FAFSA form. But, you can remove schools at any time to make room for new schools. You can add up to 10 schools at a time. [If you're applying to more than 10 schools, here's what you should do.](#)

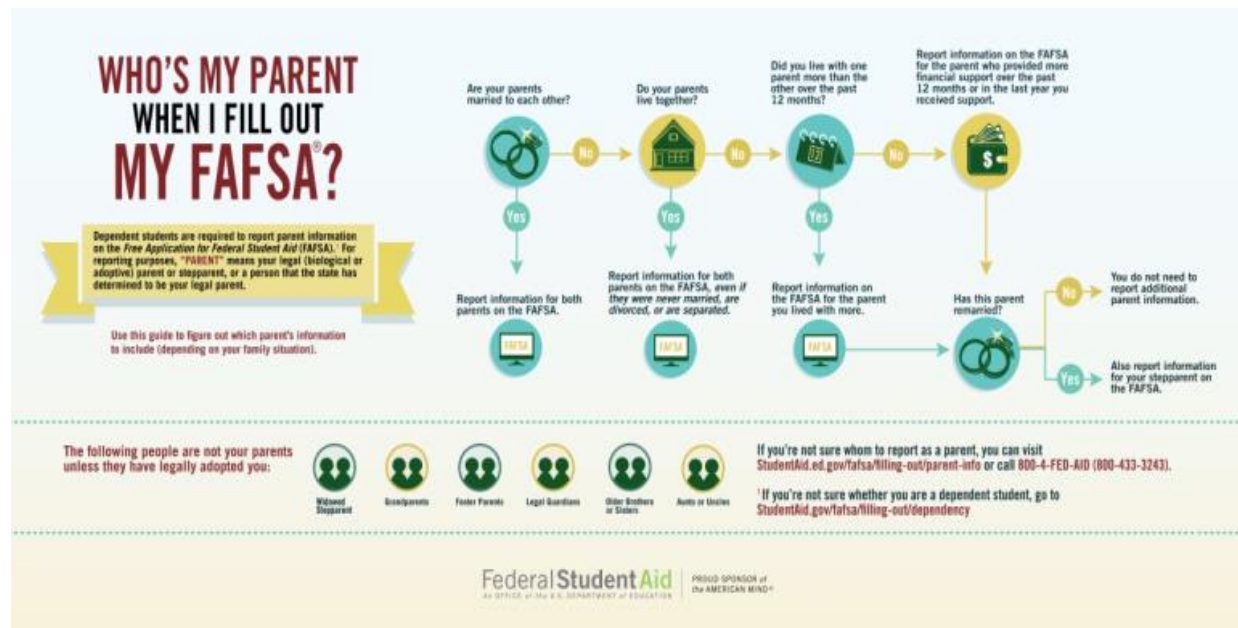
5) Answer the dependency status questions

In the dependency status section, you'll be asked a [series of specific questions](#) to determine whether you are required to provide parent information on the FAFSA form. The dependency guidelines are set by Congress and are different from those used by the Internal Revenue Service (IRS). Even if you live on your own, support yourself, and file taxes on your own, you may still be considered a dependent student for federal student aid purposes. If you are determined to be a dependent student, you'll be required to report information about your parent(s). If you're determined to be an independent student, you won't have to provide parent information and you can skip the next step.

6) Fill out the Parent Demographics section

This is where your parent(s) will provide basic demographic information. Remember that it doesn't matter if you don't live with your parent(s); you still must report information about them if you were determined to be a dependent student in the step above.

Start by figuring out who counts as your parent on the FAFSA form.



Determine who takes the parent role in the FAFSA form using this graphic.

- [Read specific guidance about reporting your parents' information as a dependent student.](#)
- [What to do if you are not able to provide parent info due to special circumstances.](#)

• 7) Supply your financial information

- Here is where you and your parent(s) (if applicable) will provide your financial information. This step is incredibly simple if you use the IRS Data Retrieval Tool (DRT). The IRS DRT allows you to import your IRS tax information into the FAFSA form with just a few clicks. Using this tool also may reduce the amount of paperwork you need to provide to your school. So, if you're eligible, use it!
- **TIP: Make sure you don't list your parent's income under the student income line, this will cause an error that would possibly cause student not to receive the Pell Grant until the error is discovered.**

SIMPLE STEPS TO TRANSFER TAX INFORMATION INTO YOUR FAFSA FORM


The IRS Data Retrieval Tool (IRS DRT) Electronically Transfers Your Federal Tax Return Information Into Your FAFSA Form

EASY Transfer info with the click of a button.


FAST Instantly retrieve your information.


ACCURATE Correctly fill in your information.

HOW



INCOME TAX INFO





SUBMIT YOUR FAFSA FORM
(Free Application for Federal Student Aid)

- 1** Log in to your current FAFSA form or start a new application at fafsa.gov.
- 2** In the finances section of the online form, you will see a "Link to IRS" button if you are eligible to use the IRS DRT.
- 3** Click the "Link to IRS" button and log in with your FSA ID to be transferred to the IRS to retrieve your info.
- 4** Once at the IRS site, enter your information exactly as it appears on your federal income tax return and click the "Submit" button.
- 5** Check the "Transfer My Tax Information into the FAFSA form" box, and click the "Transfer Now" button.
- 6** You will know that your federal tax return information has been successfully transferred because the words "Transferred from the IRS" will display in place of the IRS information in your FAFSA form.

"For your protection, your tax information will not be displayed on either the IRS site or fafsa.gov."

The IRS DRT can be used by both students and parents.

Federal Student Aid
AN OFFICE OF THE U.S. DEPARTMENT OF EDUCATION

PROUD SPONSOR OF THE AMERICAN MIND™

To learn more about the IRS DRT, visit StudentAid.gov/irsdrt

- You can easily transfer your tax information into your FAFSA form using the IRS DRT.
- To access the tool, indicate that you've "already completed" taxes on the student or parent finances page. If you're eligible, you'll see a "LINK TO IRS" button. Choose that option and follow the prompts.

☰ **IRS Data Retrieval Tool**

Applying is faster and easier if you transfer your tax return information into this FAFSA with the IRS Data Retrieval Tool (IRS DRT)!

LINK TO IRS ↔

◀ PREVIOUS

NEXT ▶

- Link to the IRS DRT to easily incorporate your income tax information into the FAFSA form.

8) Sign and submit your FAFSA form

You're not finished with the FAFSA form until you (and your parent, if you're a dependent student) sign it. The quickest and easiest way to sign your FAFSA form is online with your FSA ID.

Note: If you (the student) logged in to the FAFSA form with your FSA ID at the beginning, you won't need to provide it again on this page. But, if you're a dependent student, your parent will still need to sign before you can completely submit.

Sign and Submit Tips:


- If you or your parent forgot your FSA ID username or password, you can [retrieve it](#).
- Make sure you and your parent don't mix up your FSA IDs. This is one of the most common errors we see, and why it's extremely important for each person to create his or her own FSA ID and not share it with anyone.
- Make sure the parent who is using his or her FSA ID to sign the FAFSA form chooses the right parent number from the drop-down menu. If your parent doesn't remember whether he or she was listed as Parent 1 or Parent 2, he or she can go back to the parent demographics section to check.
- [Here's what you should do if you get an error saying that your FSA ID information doesn't match the information provided on the FAFSA form.](#)
- If you have siblings, your parent can use the same FSA ID to sign FAFSA forms for all of his or her children. Your parent can also transfer his or her information into your sibling's application by choosing the option provided on the FAFSA confirmation page.

The FAFSA form allows you to continue with state applications or for your parents to complete it for multiple children.

- We recommend signing the FAFSA form with an FSA ID because it's the fastest way to get your FAFSA form processed. However, if you and/or your parent are unable to sign the FAFSA form electronically with an FSA ID, you can mail in a signature page. From the sign and submit page, select "Other options to sign and submit" and then choose "Print A Signature Page." Just keep in mind that your FAFSA form will take longer to process if you go this route.

Signature Options

Student Demographics ✓ School Selection ✓ Dependency Status ✓ Parent Demographics ✓ Parent Financials ✓ Student Financials ✓ **Sign & Submit** Confirmation



Student Signature for
Social Security Number: XXX-XX-4343
Last Name: last
Date of Birth: 06/06/2000


What is your (the student's) FSA ID?
Do not enter the FSA ID if you are not the student.

FSA ID Username, E-mail Address, or Mobile Number ?

[Forgot Username](#) | [Create an FSA ID](#)

FSA ID Password ?

[Forgot Password](#)

SIGN THIS FAFSA 

OTHER OPTIONS TO SIGN AND SUBMIT

SIGNATURE STATUS

NEXT

Don't forget to sign and submit the FAFSA form.

Congrats on finishing! You're one step closer to getting money for college.

This document was developed in conjunction with documentation from studetnaid.gov