

Bluefield State University
College of Education and County Partnership Agreement

A. Purpose Statement

The county and schools will provide supervised clinical experience to assist in the translation of theory and research into practice. These schools will provide an environment where current research-based instructional practices and programs can be observed and experienced by those preparing for professional careers in education.

The partnership is collaboration among school/college faculty and students to enhance public education. This partnership is founded on the premise that both learners of public schools and learners from the college can benefit this partnership.

We seek to achieve the following goals:

- The best possible environment for student academic learning and personal self-fulfillment
- Opportunities for pre-service and career-long professional learning and development of teachers
- Ongoing access to the best knowledge and talent related to student learning and development
- To create opportunities for enhancing the professional nature of teaching

B. The School Should Be Prepared to Provide:

- Placement for Bluefield State University students
- A cadre of teachers to be invited to participate in in-service seminars on current practices of teaching/supervision
- Flexible field experiences with access to a wide range of grade levels and facilities
- Access to curriculum materials and instructional technology
- Access with necessary approval to school information/data for clinical related work
- Opportunities for school faculty to voluntarily participate on the EPPAC and other committees

C. The Teacher Education Unit Should Be Prepared to Provide:

- Consultant services and technical assistance in a variety of educational activities
- Workshops and seminars related to selected educational topics
- College staff to serve on committees as requested
- Assistance in grant writing for collaborative projects
- Student teachers and pre-student teachers

Jefferson County Schools
Schools/County

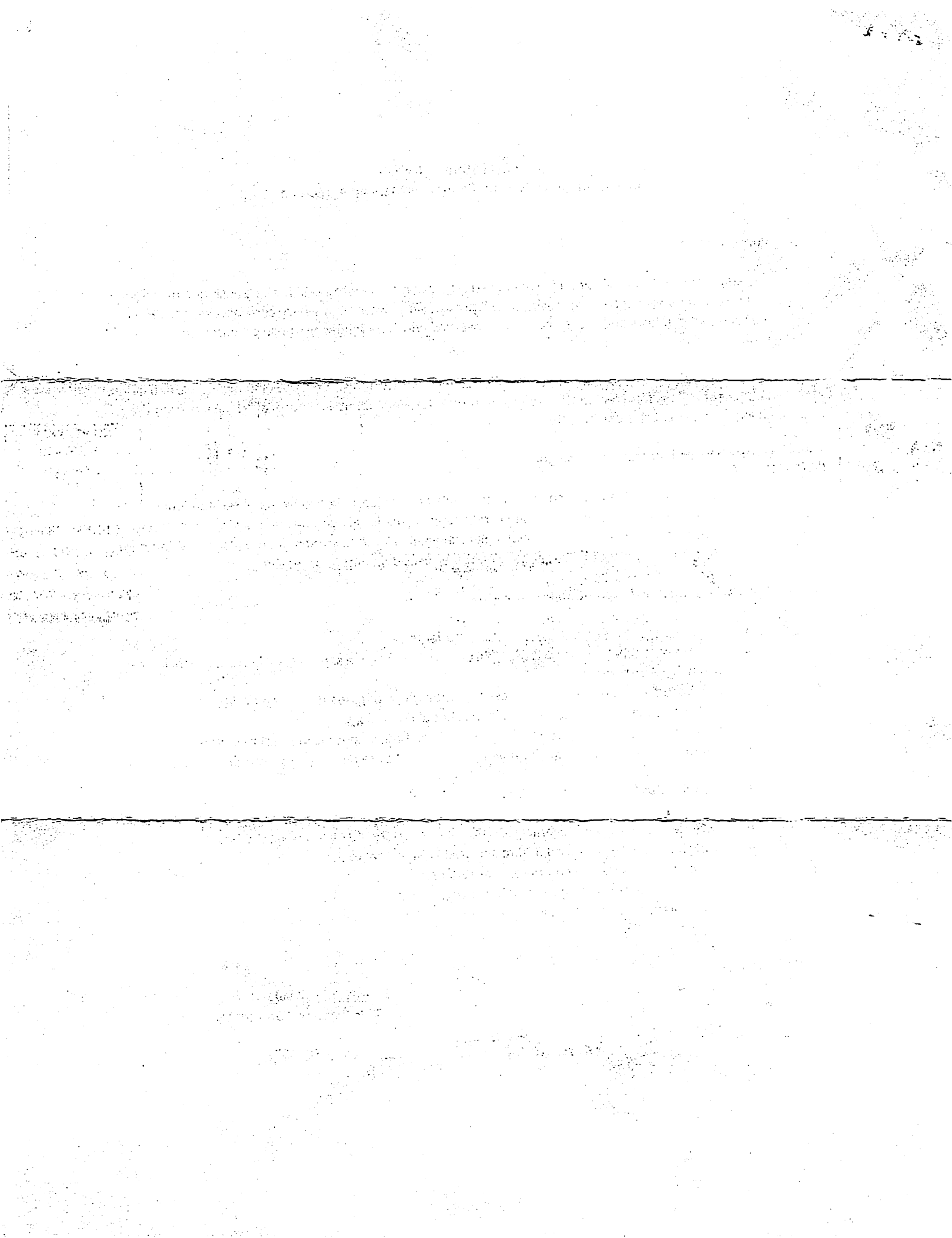


Superintendent or Designee

Darrell Thompson, Ed. D.
BSC Placement Coordinator

November 30, 2022

Date



Bluefield State College
College of Education and County Partnership Agreement

A. Purpose Statement

The county and schools will provide supervised clinical experience to assist in the translation of theory and research into practice. These schools will provide an environment where current research-based instructional practices and programs can be observed and experienced by those preparing for professional careers in education.

The partnership is collaboration among school/college faculty and students to enhance public education. This partnership is founded on the premise that both learners of public schools and learners from the college can benefit this partnership.

We seek to achieve the following goals:

- The best possible environment for student academic learning and personal self-fulfillment
- Opportunities for pre-service and career-long professional learning and development of teachers
- Ongoing access to the best knowledge and talent related to student learning and development
- To create opportunities for enhancing the professional nature of teaching

B. The School Should Be Prepared to Provide:

- Placement for Bluefield State college students
- A cadre of teachers to be invited to participate in in-service seminars on current practices of teaching/supervision
- Flexible field experiences with access to a wide range of grade levels and facilities
- Access to curriculum materials and instructional technology
- Access with necessary approval to school information/data for clinical related work
- Opportunities for school faculty to voluntarily participate on the EPPAC and other committees

C. The Teacher Education Unit Should Be Prepared to Provide:

- Consultant services and technical assistance in a variety of educational activities
- Workshops and seminars related to selected educational topics
- College staff to serve on committees as requested
- Assistance in grant writing for collaborative projects
- Student teachers and pre-student teachers

Bland County Schools
Schools/County



Superintendent or Designee

Davrell Thompson, Ed. D.
BSC Placement Coordinator

April 7, 2022
Date

REPORT OF THE COMMISSIONER OF THE GENERAL LAND OFFICE

1880

IN ANSWER TO A RESOLUTION PASSED BY THE HOUSE OF COMMONS, IN APRIL 1879, RELATIVE TO THE LANDS BELONGING TO THE CROWN, AND TO THE LANDS BELONGING TO THE SEVERAL STATES AND TERRITORIES OF THE UNITED STATES.

BY THE COMMISSIONER OF THE GENERAL LAND OFFICE, JOHN W. FOSTER.

GENERAL LAND OFFICE
WASHINGTON
1880

The following is a list of the lands belonging to the United States, and to the several States and Territories, as of the 1st day of January, 1880. The lands are classified according to their location, and the nature of the title held by the United States. The total area of the lands is 1,000,000,000 acres.

Of the total area, 100,000,000 acres are held by the United States, and 900,000,000 acres are held by the several States and Territories.

The following is a list of the lands held by the United States, and the several States and Territories, as of the 1st day of January, 1880.

LANDS HELD BY THE UNITED STATES

CLASSIFICATION	ACRES
Public lands	100,000,000
Reservations	50,000,000
Unappropriated lands	50,000,000
Appropriated lands	50,000,000
Total	200,000,000

Bluefield State College
College of Education and County Partnership Agreement

A. Purpose Statement

The county and schools will provide supervised clinical experience to assist in the translation of theory and research into practice. These schools will provide an environment where current research-based instructional practices and programs can be observed and experienced by those preparing for professional careers in education.

The partnership is collaboration among school/college faculty and students to enhance public education. This partnership is founded on the premise that both learners of public schools and learners from the college can benefit this partnership.

We seek to achieve the following goals:

- The best possible environment for student academic learning and personal self-fulfillment
- Opportunities for pre-service and career-long professional learning and development of teachers
- Ongoing access to the best knowledge and talent related to student learning and development
- To create opportunities for enhancing the professional nature of teaching

B. The School Should Be Prepared to Provide:

- Placement for Bluefield State college students
- A cadre of teachers to be invited to participate in in-service seminars on current practices of teaching/supervision
- Flexible field experiences with access to a wide range of grade levels and facilities
- Access to curriculum materials and instructional technology
- Access with necessary approval to school information/data for clinical related work
- Opportunities for school faculty to voluntarily participate on the EPPAC and other committees

C. The Teacher Education Unit Should Be Prepared to Provide:

- Consultant services and technical assistance in a variety of educational activities
- Workshops and seminars related to selected educational topics
- College staff to serve on committees as requested
- Assistance in grant writing for collaborative projects
- Student teachers and pre-student teachers

Fayette County Schools
Schools/County



Superintendent or Designee

Darrell Thompson, Ed. D.
BSC Placement Coordinator

April 7, 2022
Date

Copyright and Related Rights

Copyright and related rights are legal rights that recognize the creative contribution of authors and artists.

The purpose of copyright is to encourage the creation and dissemination of creative works by granting authors and artists the exclusive right to control the use of their works.

Copyright protection extends to original works of authorship, including literary, dramatic, musical, and artistic works.

Duration of Copyright

The duration of copyright varies by country and type of work. In many countries, copyright lasts for the life of the author plus a certain number of years after their death.

For works created by corporations or organizations, the duration is often based on the date of publication or the date of creation.

Some countries have a "public domain" where works are no longer protected by copyright, allowing anyone to use them without permission.

It is important to understand the duration of copyright to ensure that you are using works legally.

Consulting a legal professional can help you determine the specific copyright rules that apply to your situation.

Understanding copyright is essential for anyone who creates or uses creative works.

Respecting copyright is a key part of being a responsible citizen in a creative society.

For more information on copyright, visit the Copyright Clearance Center website.

Copyright © 2024

Published by [Publisher Name]

All rights reserved.

Printed in the United States of America.

Bluefield State College
College of Education and County Partnership Agreement

A. Purpose Statement

The county and schools will provide supervised clinical experience to assist in the translation of theory and research into practice. These schools will provide an environment where current research-based instructional practices and programs can be observed and experienced by those preparing for professional careers in education.

The partnership is collaboration among school/college faculty and students to enhance public education. This partnership is founded on the premise that both learners of public schools and learners from the college can benefit this partnership.

We seek to achieve the following goals:

- The best possible environment for student academic learning and personal self-fulfillment
- Opportunities for pre-service and career-long professional learning and development of teachers
- Ongoing access to the best knowledge and talent related to student learning and development
- To create opportunities for enhancing the professional nature of teaching

B. The School Should Be Prepared to Provide:

- Placement for Bluefield State college students
- A cadre of teachers to be invited to participate in in-service seminars on current practices of teaching/supervision
- Flexible field experiences with access to a wide range of grade levels and facilities
- Access to curriculum materials and instructional technology
- Access with necessary approval to school information/data for clinical related work
- Opportunities for school faculty to voluntarily participate on the EPPAC and other committees

C. The Teacher Education Unit Should Be Prepared to Provide:

- Consultant services and technical assistance in a variety of educational activities
- Workshops and seminars related to selected educational topics
- College staff to serve on committees as requested
- Assistance in grant writing for collaborative projects
- Student teachers and pre-student teachers

McDowell County Schools
Schools/County



Superintendent or Designee

Darrell Thompson, Ed. D.
BSC Placement Coordinator

April 7, 2022
Date

THE UNIVERSITY OF CHICAGO
DEPARTMENT OF CHEMISTRY

MEMORANDUM FOR THE RECORD
DATE: [illegible]
TO: [illegible]
FROM: [illegible]

[illegible text]

[illegible text]

[illegible text]

[illegible text]

[illegible text]

[illegible text]

**Bluefield State College
College of Education and County Partnership Agreement**

A. Purpose Statement

The county and schools will provide supervised clinical experience to assist in the translation of theory and research into practice. These schools will provide an environment where current research-based instructional practices and programs can be observed and experienced by those preparing for professional careers in education.

The partnership is collaboration among school/college faculty and students to enhance public education. This partnership is founded on the premise that both learners of public schools and learners from the college can benefit this partnership.

We seek to achieve the following goals:

- The best possible environment for student academic learning and personal self-fulfillment
- Opportunities for pre-service and career-long professional learning and development of teachers
- Ongoing access to the best knowledge and talent related to student learning and development
- To create opportunities for enhancing the professional nature of teaching

B. The School Should Be Prepared to Provide:

- Placement for Bluefield State college students
- A cadre of teachers to be invited to participate in in-service seminars on current practices of teaching/supervision
- Flexible field experiences with access to a wide range of grade levels and facilities
- Access to curriculum materials and instructional technology
- Access with necessary approval to school information/data for clinical related work
- Opportunities for school faculty to voluntarily participate on the EPPAC and other committees

C. The Teacher Education Unit Should Be Prepared to Provide:

- Consultant services and technical assistance in a variety of educational activities
- Workshops and seminars related to selected educational topics
- College staff to serve on committees as requested
- Assistance in grant writing for collaborative projects
- Student teachers and pre-student teachers

Giles County Schools
Schools/County



Superintendent or Designee

4/12/2022

Darrell Thompson, Ed. D.
BSC Placement Coordinator

April 7, 2022
Date

Bluefield State College
College of Education and County Partnership Agreement

A. Purpose Statement

The county and schools will provide supervised clinical experience to assist in the translation of theory and research into practice. These schools will provide an environment where current research-based instructional practices and programs can be observed and experienced by those preparing for professional careers in education.

The partnership is collaboration among school/college faculty and students to enhance public education. This partnership is founded on the premise that both learners of public schools and learners from the college can benefit this partnership.

We seek to achieve the following goals:

- The best possible environment for student academic learning and personal self-fulfillment
- Opportunities for pre-service and career-long professional learning and development of teachers
- Ongoing access to the best knowledge and talent related to student learning and development
- To create opportunities for enhancing the professional nature of teaching

B. The School Should Be Prepared to Provide:

- Placement for Bluefield State college students
- A cadre of teachers to be invited to participate in in-service seminars on current practices of teaching/supervision
- Flexible field experiences with access to a wide range of grade levels and facilities
- Access to curriculum materials and instructional technology
- Access with necessary approval to school information/data for clinical related work
- Opportunities for school faculty to voluntarily participate on the EPPAC and other committees

C. The Teacher Education Unit Should Be Prepared to Provide:

- Consultant services and technical assistance in a variety of educational activities
- Workshops and seminars related to selected educational topics
- College staff to serve on committees as requested
- Assistance in grant writing for collaborative projects
- Student teachers and pre-student teachers

Summers County Schools
Schools/County



Superintendent or Designee

Darrell Thompson, Ed. D.
BSC Placement Coordinator

April 7, 2022
Date

Faint, illegible text covering the entire page, possibly bleed-through from the reverse side. The text is too light to transcribe accurately.

[Handwritten signature]

Bluefield State College
College of Education and County Partnership Agreement

A. Purpose Statement

The county and schools will provide supervised clinical experience to assist in the translation of theory and research into practice. These schools will provide an environment where current research-based instructional practices and programs can be observed and experienced by those preparing for professional careers in education.

The partnership is collaboration among school/college faculty and students to enhance public education. This partnership is founded on the premise that both learners of public schools and learners from the college can benefit this partnership.

We seek to achieve the following goals:

- The best possible environment for student academic learning and personal self-fulfillment
- Opportunities for pre-service and career-long professional learning and development of teachers
- Ongoing access to the best knowledge and talent related to student learning and development
- To create opportunities for enhancing the professional nature of teaching

B. The School Should Be Prepared to Provide:

- Placement for Bluefield State college students
- A cadre of teachers to be invited to participate in in-service seminars on current practices of teaching/supervision
- Flexible field experiences with access to a wide range of grade levels and facilities
- Access to curriculum materials and instructional technology
- Access with necessary approval to school information/data for clinical related work
- Opportunities for school faculty to voluntarily participate on the EPPAC and other committees

C. The Teacher Education Unit Should Be Prepared to Provide:

- Consultant services and technical assistance in a variety of educational activities
- Workshops and seminars related to selected educational topics
- College staff to serve on committees as requested
- Assistance in grant writing for collaborative projects
- Student teachers and pre-student teachers

Monroe County Schools
Schools/County


Superintendent or Designee

Dannell Thompson, Ed. D.
BSC Placement Coordinator

April 7, 2022
Date

**Bluefield State College
College of Education and County Partnership Agreement**

A. Purpose Statement

The county and schools will provide supervised clinical experience to assist in the translation of theory and research into practice. These schools will provide an environment where current research-based instructional practices and programs can be observed and experienced by those preparing for professional careers in education.

The partnership is collaboration among school/college faculty and students to enhance public education. This partnership is founded on the premise that both learners of public schools and learners from the college can benefit this partnership.

We seek to achieve the following goals:

- The best possible environment for student academic learning and personal self-fulfillment
- Opportunities for pre-service and career-long professional learning and development of teachers
- Ongoing access to the best knowledge and talent related to student learning and development
- To create opportunities for enhancing the professional nature of teaching

B. The School Should Be Prepared to Provide:

- Placement for Bluefield State college students
- A cadre of teachers to be invited to participate in in-service seminars on current practices of teaching/supervision
- Flexible field experiences with access to a wide range of grade levels and facilities
- Access to curriculum materials and instructional technology
- Access with necessary approval to school information/data for clinical related work
- Opportunities for school faculty to voluntarily participate on the EPPAC and other committees

C. The Teacher Education Unit Should Be Prepared to Provide:

- Consultant services and technical assistance in a variety of educational activities
- Workshops and seminars related to selected educational topics
- College staff to serve on committees as requested
- Assistance in grant writing for collaborative projects
- Student teachers and pre-student teachers

Nicholas County Schools
Schools/County



Superintendent or Designee

Darrell Thompson, Ed. D.
BSC Placement Coordinator

April 7, 2022
Date

1945

1945

1945

1945

1945

1945

1945

1945

1945

Bluefield State College
College of Education and County Partnership Agreement

A. Purpose Statement

The county and schools will provide supervised clinical experience to assist in the translation of theory and research into practice. These schools will provide an environment where current research-based instructional practices and programs can be observed and experienced by those preparing for professional careers in education.

The partnership is collaboration among school/college faculty and students to enhance public education. This partnership is founded on the premise that both learners of public schools and learners from the college can benefit this partnership.

We seek to achieve the following goals:

- The best possible environment for student academic learning and personal self-fulfillment
- Opportunities for pre-service and career-long professional learning and development of teachers
- Ongoing access to the best knowledge and talent related to student learning and development
- To create opportunities for enhancing the professional nature of teaching

B. The School Should Be Prepared to Provide:

- Placement for Bluefield State college students
- A cadre of teachers to be invited to participate in in-service seminars on current practices of teaching/supervision
- Flexible field experiences with access to a wide range of grade levels and facilities
- Access to curriculum materials and instructional technology
- Access with necessary approval to school information/data for clinical related work
- Opportunities for school faculty to voluntarily participate on the EPPAC and other committees

C. The Teacher Education Unit Should Be Prepared to Provide:

- Consultant services and technical assistance in a variety of educational activities
- Workshops and seminars related to selected educational topics
- College staff to serve on committees as requested
- Assistance in grant writing for collaborative projects
- Student teachers and pre-student teachers

Wythe County Schools
Schools/County



Superintendent or Designee

Darrell Thompson, Ed. D.
BSC Placement Coordinator

April 7, 2022
Date

THE UNIVERSITY OF CHICAGO
OFFICE OF THE DEAN OF STUDENTS

Dear Mr. [Name]:

I am sorry to hear that you are having trouble with your studies. It is important that you continue to work hard and seek help when you need it. Please let me know how I can assist you.

Very truly yours,
[Signature]

I am sorry to hear that you are having trouble with your studies. It is important that you continue to work hard and seek help when you need it. Please let me know how I can assist you.

I am sorry to hear that you are having trouble with your studies. It is important that you continue to work hard and seek help when you need it. Please let me know how I can assist you.

I am sorry to hear that you are having trouble with your studies. It is important that you continue to work hard and seek help when you need it. Please let me know how I can assist you.

I am sorry to hear that you are having trouble with your studies. It is important that you continue to work hard and seek help when you need it. Please let me know how I can assist you.

I am sorry to hear that you are having trouble with your studies. It is important that you continue to work hard and seek help when you need it. Please let me know how I can assist you.

I am sorry to hear that you are having trouble with your studies. It is important that you continue to work hard and seek help when you need it. Please let me know how I can assist you.

Bluefield State College
College of Education and County Partnership Agreement

A. Purpose Statement

The county and schools will provide supervised clinical experience to assist in the translation of theory and research into practice. These schools will provide an environment where current research-based instructional practices and programs can be observed and experienced by those preparing for professional careers in education.

The partnership is collaboration among school/college faculty and students to enhance public education. This partnership is founded on the premise that both learners of public schools and learners from the college can benefit this partnership.

We seek to achieve the following goals:

- The best possible environment for student academic learning and personal self-fulfillment
- Opportunities for pre-service and career-long professional learning and development of teachers
- Ongoing access to the best knowledge and talent related to student learning and development
- To create opportunities for enhancing the professional nature of teaching

B. The School Should Be Prepared to Provide:

- Placement for Bluefield State college students
- A cadre of teachers to be invited to participate in in-service seminars on current practices of teaching/supervision
- Flexible field experiences with access to a wide range of grade levels and facilities
- Access to curriculum materials and instructional technology
- Access with necessary approval to school information/data for clinical related work
- Opportunities for school faculty to voluntarily participate on the EPPAC and other committees

C. The Teacher Education Unit Should Be Prepared to Provide:

- Consultant services and technical assistance in a variety of educational activities
- Workshops and seminars related to selected educational topics
- College staff to serve on committees as requested
- Assistance in grant writing for collaborative projects
- Student teachers and pre-student teachers

Greenbrier County Schools
Schools/County



Superintendent or Designee

Darrell Thompson, Ed. D.
BSC Placement Coordinator

April 20, 2022
Date

Bluefield State College
College of Education and County Partnership Agreement

A. Purpose Statement

The county and schools will provide supervised clinical experience to assist in the translation of theory and research into practice. These schools will provide an environment where current research-based instructional practices and programs can be observed and experienced by those preparing for professional careers in education.

The partnership is collaboration among school/college faculty and students to enhance public education. This partnership is founded on the premise that both learners of public schools and learners from the college can benefit this partnership.

We seek to achieve the following goals:

- The best possible environment for student academic learning and personal self-fulfillment
- Opportunities for pre-service and career-long professional learning and development of teachers
- Ongoing access to the best knowledge and talent related to student learning and development
- To create opportunities for enhancing the professional nature of teaching

B. The School Should Be Prepared to Provide:

- Placement for Bluefield State college students
- A cadre of teachers to be invited to participate in in-service seminars on current practices of teaching/supervision
- Flexible field experiences with access to a wide range of grade levels and facilities
- Access to curriculum materials and instructional technology
- Access with necessary approval to school information/data for clinical related work
- Opportunities for school faculty to voluntarily participate on the EPPAC and other committees

C. The Teacher Education Unit Should Be Prepared to Provide:

- Consultant services and technical assistance in a variety of educational activities
- Workshops and seminars related to selected educational topics
- College staff to serve on committees as requested
- Assistance in grant writing for collaborative projects
- Student teachers and pre-student teachers

Raleigh County Schools
Schools/County



Superintendent or Designee

Darrell Thompson, Ed. D.
BSC Placement Coordinator

April 7, 2022
Date

Bluefield State College
College of Education and County Partnership Agreement

A. Purpose Statement

The county and schools will provide supervised clinical experience to assist in the translation of theory and research into practice. These schools will provide an environment where current research-based instructional practices and programs can be observed and experienced by those preparing for professional careers in education.

The partnership is collaboration among school/college faculty and students to enhance public education. This partnership is founded on the premise that both learners of public schools and learners from the college can benefit this partnership.

We seek to achieve the following goals:

- The best possible environment for student academic learning and personal self-fulfillment
- Opportunities for pre-service and career-long professional learning and development of teachers
- Ongoing access to the best knowledge and talent related to student learning and development
- To create opportunities for enhancing the professional nature of teaching

B. The School Should Be Prepared to Provide:

- Placement for Bluefield State college students
- A cadre of teachers to be invited to participate in in-service seminars on current practices of teaching/supervision
- Flexible field experiences with access to a wide range of grade levels and facilities
- Access to curriculum materials and instructional technology
- Access with necessary approval to school information/data for clinical related work
- Opportunities for school faculty to voluntarily participate on the EPPAC and other committees

C. The Teacher Education Unit Should Be Prepared to Provide:

- Consultant services and technical assistance in a variety of educational activities
- Workshops and seminars related to selected educational topics
- College staff to serve on committees as requested
- Assistance in grant writing for collaborative projects
- Student teachers and pre-student teachers

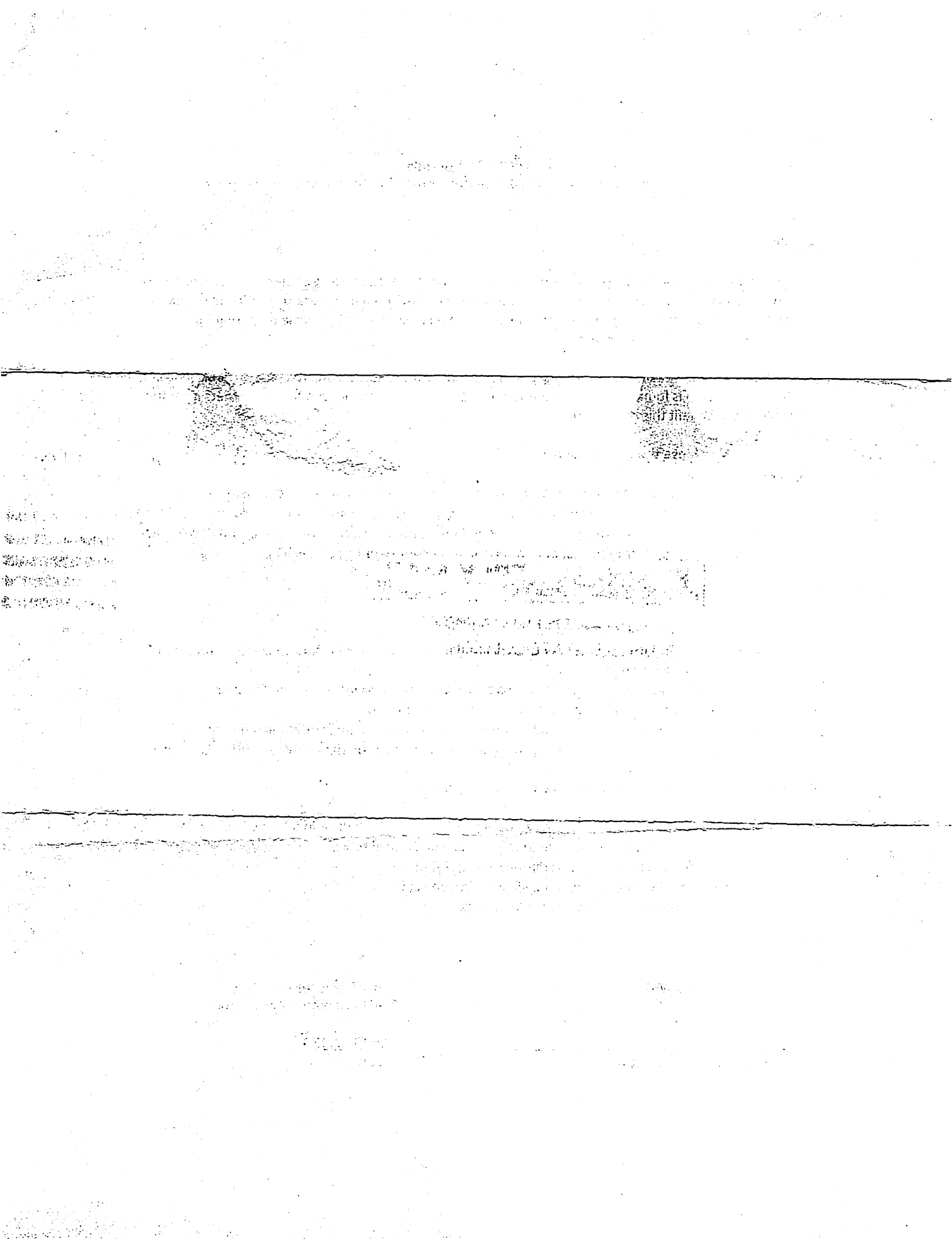
Smyth County Schools
Schools/County



Superintendent or Designee

Darrell Thompson, Ed. D.
BSC Placement Coordinator

April 7, 2022
Date



Bluefield State College
College of Education and County Partnership Agreement

A. Purpose Statement

The county and schools will provide supervised clinical experience to assist in the translation of theory and research into practice. These schools will provide an environment where current research-based instructional practices and programs can be observed and experienced by those preparing for professional careers in education.

The partnership is collaboration among school/college faculty and students to enhance public education. This partnership is founded on the premise that both learners of public schools and learners from the college can benefit this partnership.

We seek to achieve the following goals:

- The best possible environment for student academic learning and personal self-fulfillment
- Opportunities for pre-service and career-long professional learning and development of teachers
- Ongoing access to the best knowledge and talent related to student learning and development
- To create opportunities for enhancing the professional nature of teaching

B. The School Should Be Prepared to Provide:

- Placement for Bluefield State college students
- A cadre of teachers to be invited to participate in in-service seminars on current practices of teaching/supervision
- Flexible field experiences with access to a wide range of grade levels and facilities
- Access to curriculum materials and instructional technology
- Access with necessary approval to school information/data for clinical related work
- Opportunities for school faculty to voluntarily participate on the EPPAC and other committees

C. The Teacher Education Unit Should Be Prepared to Provide:

- Consultant services and technical assistance in a variety of educational activities
- Workshops and seminars related to selected educational topics
- College staff to serve on committees as requested
- Assistance in grant writing for collaborative projects
- Student teachers and pre-student teachers

Tazewell County Schools
Schools/County



Superintendent or Designee

Darrell Thompson, Ed. D.
BSC Placement Coordinator

April 20, 2022
Date

Page 1 of 1

THE STATE OF TEXAS,
COUNTY OF DALLAS.I, the undersigned, Clerk of the County of Dallas, Texas, do hereby certify that the within and foregoing is a true and correct copy of the original as the same appears in the records of the County of Dallas, Texas.GIVEN UNDER MY HAND AND SEAL OF OFFICE, this _____ day of _____, 20____.Clerk of the County of Dallas, Texas.By _____

[Handwritten Signature]

**School System and Institution of Higher Education
Articles of Agreement
For Teacher Candidate Clinical Experiences and Student Teaching**

This agreement made on the 1st day of April, 2022, by and between Bluefield State College and Mercer County Public Schools will set forth responsibilities relating to the placement of teacher candidates for clinical experience and student teaching in the public schools during the 2022-2023 fiscal year. This agreement shall be effective from July 1, 2022, through June 30, 2023.


I. The Institution of Higher Education

- A. Affirms that all teacher candidates are bona fide students of the institution requesting placement in the county.
- B. Affirms that all teacher candidates will be placed at teaching stations following the school system's procedure for securing proper placements and selection of professionally certified cooperating teachers.
- C. Affirms that all teacher candidates placed have met the minimum course work required at the level appropriate for clinical or student teaching experience(s), have obtained a WVDE Student Teacher Permit prior to placement and have submitted Permit and Results of Background Check to Mercer County Board of Education prior to placement.
- D. Affirms that the teacher candidates will be properly supervised, a minimum of five (5) visits per placement, by Institution of Higher Education personnel.
- E. Affirms that Institution of Higher Education personnel will consult with proper school system administrators and teachers on the progress or lack of progress of teacher candidates during the clinical or student teaching experience(s).
- F. Affirms that teacher candidates will abide by all regulations of the school system.
- G. Affirms that teacher candidates have been instructed about employee confidentiality and confidentiality of student records and will fully comply with county practices as outlined in Mercer County Policies J-4, BFH, and G-24 section 3.1.7.
- H. Affirms that any compensation or tuition waiver for principals and/or teachers of cooperating schools is provided throughout the school system unless otherwise agreed.

II. The School System Board of Education

- A. Affirms that it will permit teacher candidates as approved by the Board to practice teach and become involved in other educational activities.
- B. Affirms that it will place all teacher candidates (both clinical and student teaching) on the Board's agenda and make their presence and assignment(s) in the school system a part of the board minutes, hereby recognizing their official acceptance in the school system as being placed.
- C. Provides adequate counseling/in-service for teacher candidates by addressing school system and building policy to enhance the teacher candidate's knowledge of the system and the rules and regulations under which all employees must comply in carrying out their regular duties.
- D. Affirms that it will cooperate with the personnel from the Institution of Higher Education in the selection of the site(s) and station(s) for the teacher candidates, both clinical and student teaching.
- E. Affirms that if a conflict shall arise during a teacher candidate's clinical or student teaching experience, that appropriate Institution of Higher Education personnel will be contacted to resolve said problem in an amenable manner, with minimal trauma to students, the teacher candidate and staff members.


This agreement is signed by both parties and shall become effective when approved by the Mercer County Board of Education.



Darrell Thompson, Ed.D.
Coordinator of Clinical Experiences
Bluefield State College



Date



Superintendent, MCS



Date