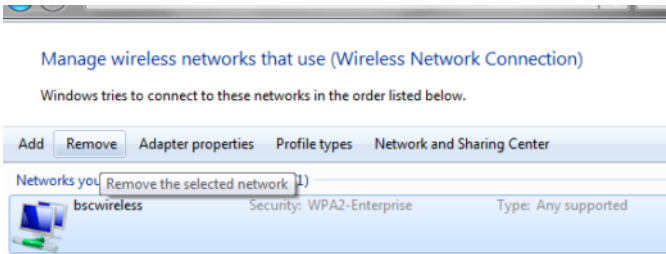


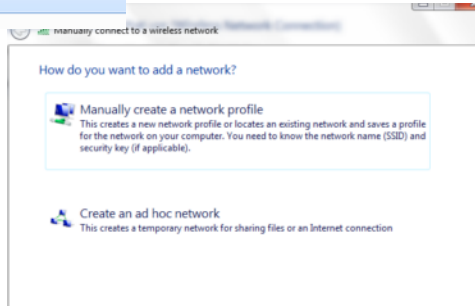
Instructions for Wireless using Windows Vista or Windows 7



Click **START** or  then **CONTROL PANEL** then **NETWORK AND SHARING CENTER**  
On left hand side click **MANAGE WIRELESS NETWORKS**  
If **BSCWIRELESS** is in list highlight it and click **REMOVE**



Click **ADD** then click **MANUALLY CREATE A NETWORK PROFILE**



Click **Add** and enter info as shown below and click **OK**



Enter information for the wireless network you want to add

Network name:

Security type:

Encryption type:

Security Key:   Hide characters

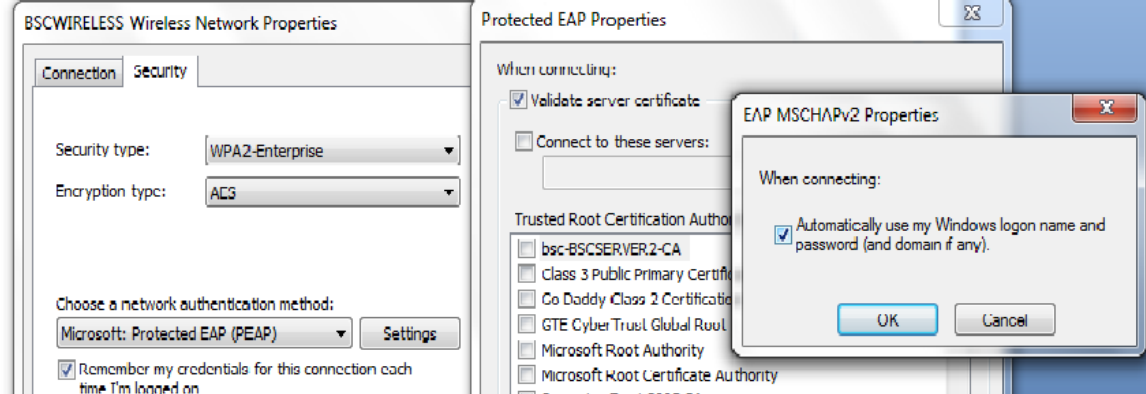
Start this connection automatically

Connect even if the network is not broadcasting

Warning: If you select this option, your computer's privacy might be at risk.

Click **Change connection settings**, Then **security/ settings/ configure**  
Remove check mark by **AUTOMATICALLY USE MY Windows Logon**

Successfully added **BSCWIRELESS**



Click **OK, OK, OK** then **Close**. You can now get on the wireless by using your **BSC** username and password.  
If you are asked for Domain enter **BSC**